



# Portfolio

PF200803

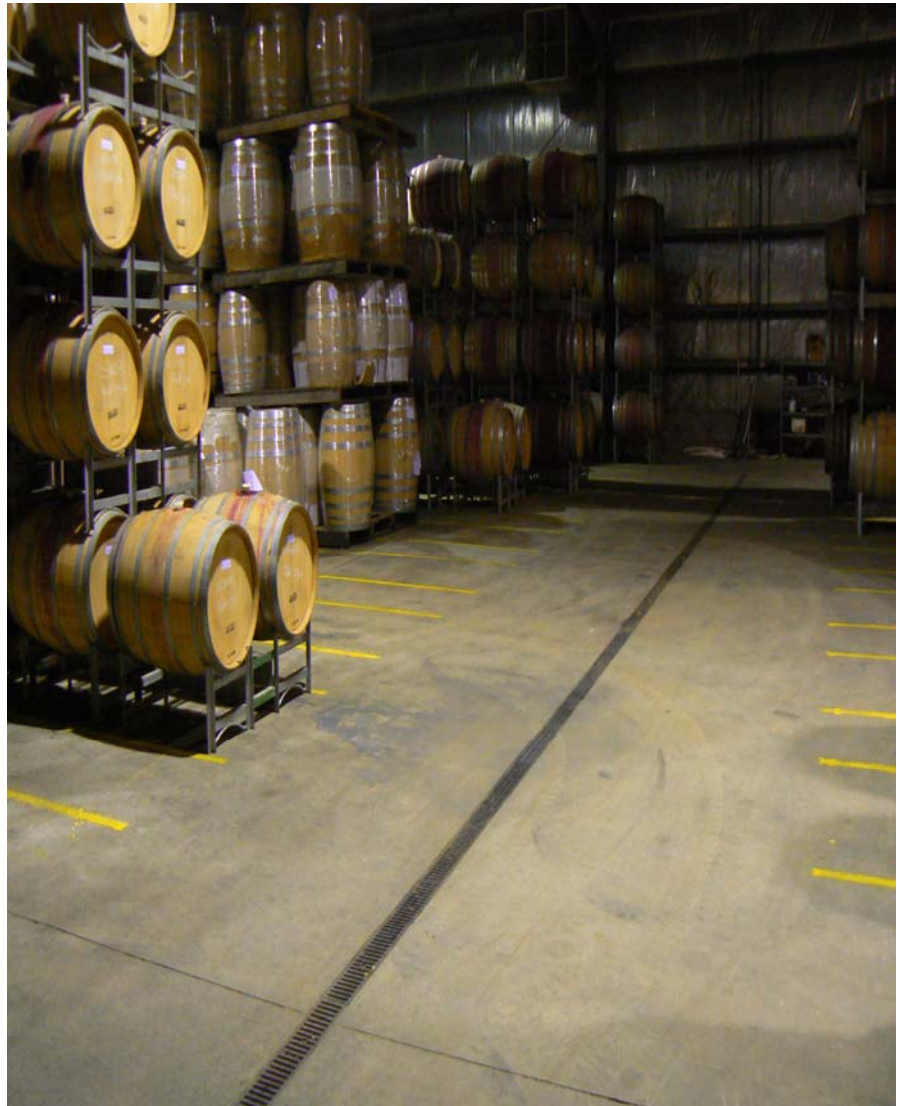
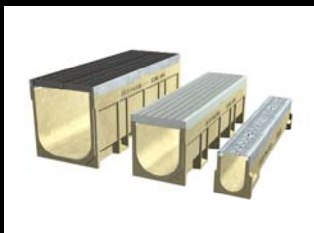
## De Bortoli Winery

*The De Bortoli winery and vineyard is located at Dixons Creek just 8 kilometers along the Melba Highway, from the small township of Yarra Glen.*

*For two decades, the winery has undergone regular expansion and upgrades in line with its growing success. At the various construction stages, the ACO KlassikDrain trench drain was installed.*

*One of the latest installations is in the barrel store rooms, where the drainage system is used to collect spills as well as support regular traffic. The system is fitted with Class D210kN (AS3996) Slotted ductile iron grates and locked with QuickLok boltless mechanisms for the quick fitting and removal of grates, ideal for regular cleaning operations.*

*One of the key reasons why ACO KlassikDrain is constantly specified for Australian wineries is for its renowned ease of rapid installation.*



### *Product Details*

De Bortoli

KlassikDrain KS100 system (stainless wearing edge) with slotted iron grate

KlassikDrain K100 system with composite and galvanized grates

**Client:**

**Product featured:**

**Other ACO products used:**