

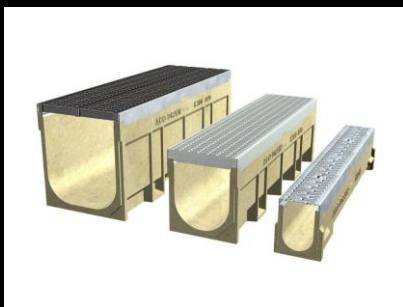
Taronga Zoo Main Entrance Plaza

The Taronga Zoo Main Entrance Plaza, Sydney consists of the restoration of a heritage listed building and new facilities namely the zoo shop, café, information kiosk and ticketing services.

Part of the design brief was to change the Main Entrance Plaza into a more open area providing better access to car parking and bus bays.

The pavement areas are heavily trafficked by people of all ages every day. Designers selected KlassikDrain with Heelsafe® grates to provide efficient drainage and a heelsafe environment.

**For more product info, visit
www.acoaus.com.au/drain**



Product Details

Taylor Thomson Whitting

KlassikDrain K200 with Heelsafe® ductile iron grates

ACO Cablemate® polymer concrete pits with Rhinocast® access covers with brass decorative edges

Specifier:

Product featured:

**Other ACO products used in
this project:**